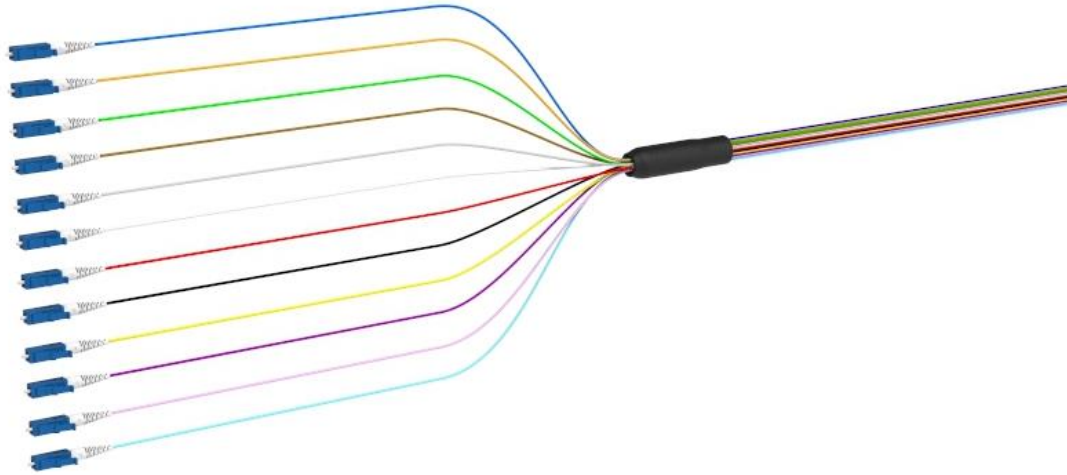


Giganet fanout cable assembly consists of multiple fiber connectors terminated on ribbon fiber or cable on one end and single fiber connectors terminated on 900um tubing on the other. A Fan-Out is used to facilitate the conversion from the ribbon to individual fiber format. Used in fiber distribution panels and interconnect modules these ribbon pigtails are suitable for mass fusion splicing. These Fanouts eliminate tedious individual fiber splicing and connectorization. This unique solution reduces installation time and cost budgets.



FEATURES

- Conform to IEC, EIA-TIA, and Telcordia performance requirements
- Available in standard Singlemode and Multimode fibre types
- LC and SC connector types
- RoHS, REACH & SvHC compliant, MaterialsConflict compliant

APPLICATION

- Telecommunication networks
- Data centers, Co-location DC
- LAN or Campus wide Network

SINGLE FERRULE CONNECTOR SPECIFICATION

| Parameters | IL – Max | IL – Typical | RL (PC/APC) |
|---------------|-----------|--------------|-------------|
| SM – Standard | ≤ 0.30 dB | ≤ 0.20 dB | > 55/65 dB |
| SM – Premium | ≤ 0.15 dB | ≤ 0.12 dB | > 55/65 dB |
| MM – Standard | ≤ 0.30 dB | ≤ 0.18 dB | > 28 dB |
| MM – Premium | ≤ 0.15 dB | ≤ 0.08 dB | > 28 dB |

FANOUT CABLE CHARACTERISTICS

| Cable Characteristics | Units | Simplex |
|-------------------------------|-------|---|
| Fanout buffer material | | LSZH or PVC |
| Operating Temperature | °C | -20 to 60 |
| Ribbon Buffer | | Single array of 4-12F options impregnated with an acrylate UV curable resin |



ORDERING INFORMATION

PRODUCT PART NO CONFIGURATION GN-RPTF-1-2-3-4-5

| GN-RPTF | 1 | CONNECTORS | 2 | FIBRECORE | 3 | FIBRE SPEC | 4 | BUFFER MATERIAL | 5 | Perormance |
|---------|-----|------------|----|-----------|-----|------------|-----|-----------------|-------------|------------|
| | LC | LC | 4 | 4F | OS2 | G652D | LSH | LSOH | Leave Blank | Standard |
| | SC | SC | 6 | 6F | A1 | 657A1 | PVC | PVC | PRM | Premium |
| | LCA | LCA | 8 | 8F | OM3 | OM3 | | | | |
| | SCA | SCA | 12 | 12F | OM4 | OM4 | | | | |

Patchcords are by default LSOH

By Default Patchcords are supplied Standard Performance and back to back order can be Placed for Premium Performance