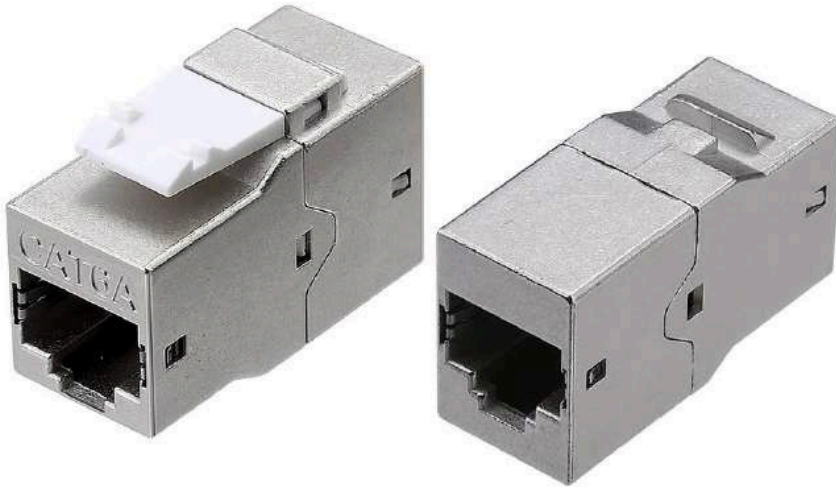


The Giganet Category 6A shielded Inline Coupler meets all international standards for Alien crosstalk suppression transfer impedance, shielding, grounding and bonding via a simple PCB compensation design. The shielded Inline Coupler is a key component of the Giganet Category 6A compliant system offering enhanced EMI and Alien crosstalk performance. The shielded Inline Coupler can be mounted into patch panels, faceplates, floor boxes, and Desk Surfaces and work area enclosures and suitable for connections between FD to outlets as well. The enhanced Giganet category 6A shielded cabling system delivers high network performance today and investment protection for future networks.



Features

- Compliant with Category 6A, Class EA.
- RoHS compliant with ergonomic features
- High quality stainless steel housing
- Suitable for 10G BaseT Ethernet applications
- Designed to easily & quickly snap in and out of wall outlets and patch panels.

Technical Specifications

Type	Cat.6a Shielded Rj45-Rj45 Inline-Coupler	
	Rohs, Reach Compliant	
Mechanical	Shielded material	Zinc alloy
	Contact material:	Phosphor bronze with 50u gold plated with a durability of 750 matching recycles
	Rj45 contact life	750 Times min
	Color	Blue/Yellow/White/Red/Green /Grey
Electrical	Contact resistance	20m OHM
	Insulation resistance	<= 500M OHM @ 100 V D C
	Withstand voltage	Dc1000v ac700v rms 60hz, imin
	Cat6a permanent link	Conform to ansi/tia/eia 568a/b.
Environmental	Storage	-40°C / +70°C
	Operation	-10°C / +60°C

Ordering Information

Part Number	Description
GN-C6A-FTP-IC	Giganet Category 6A Shielded Inline Coupler

Schematic Diagram

