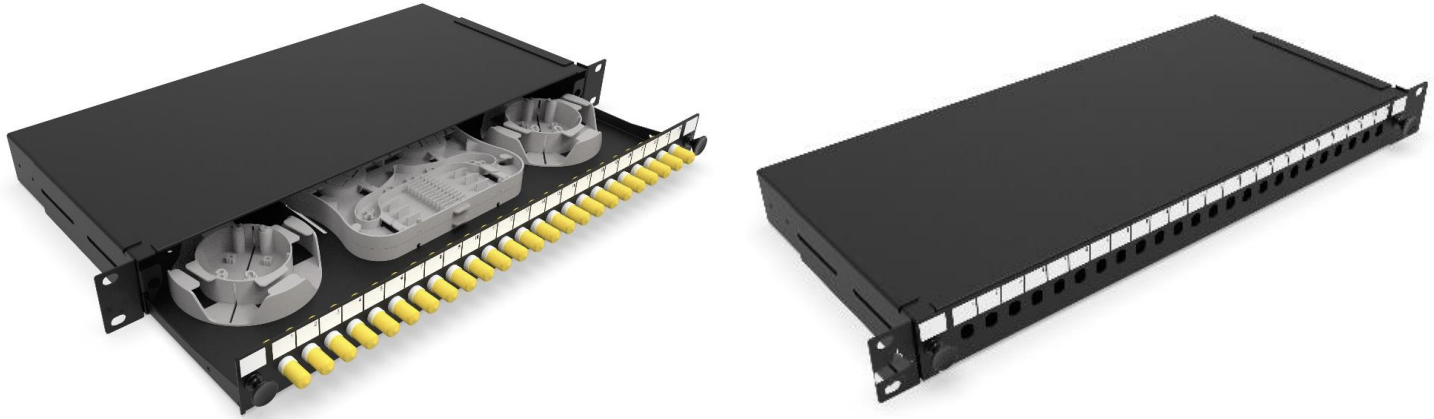


The GIGANET sliding patch panel accepts 24 adapters FC or ST within 1U space. The panel can be pre-loaded completely with the required adapters or pre-loaded with pigtails and splice accessories. The tray is locked by 2 plastic latches and lowers to a 45deg angle when fully extended. Installation and labelling are simple and easy.



### FEATURES

- Recessed panel bracket mounting
- Up to 24FO in 1U space
- Fits standard 19" rack
- 4 Rear Cable entries

### APPLICATIONS

- Enterprise network & Datacenter
- Indoor application
- Accepts Indoor and Outdoor Pre-terminated cables and conventional Splicing

### SPECIFICATION

- Mounting Type Rack 19"
- Height Unit : 1U
- Material: Cold rolled steel Housing
- Color: Black
- Application: Indoor IP20
- Lockable: No
- Dimensions: (W x D x H in MM) 482 x 205 x 44.4
- Net Weight: 2.5Kg

### DESIGN HARDWARE

- Opening Type Sliding Tray
- Access Type Front access
- Front Cable Management Optional
- Cable Entry Direction Rear
- Rear Cable Management 4 cable entries
- Slot Type FC / ST
- Number of Slots 24
- Fiber Capacity 24

### PRODUCT INFORMATION

Part Number	Product Description
GN-SPP-SEC	Giganet 1U 19" Sec Sliding Chassis with 1X24 FO Splice Tray & FO Management KIT
GN-SEC-24 ST-DX	Giganet 1U 19" Removable Front Plate 24Ports ST Duplex Unloaded