

1. Product Function

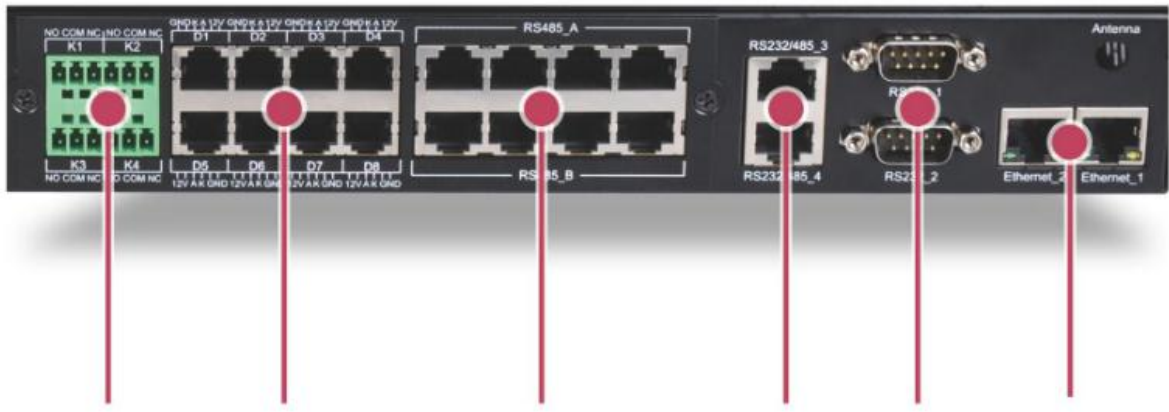
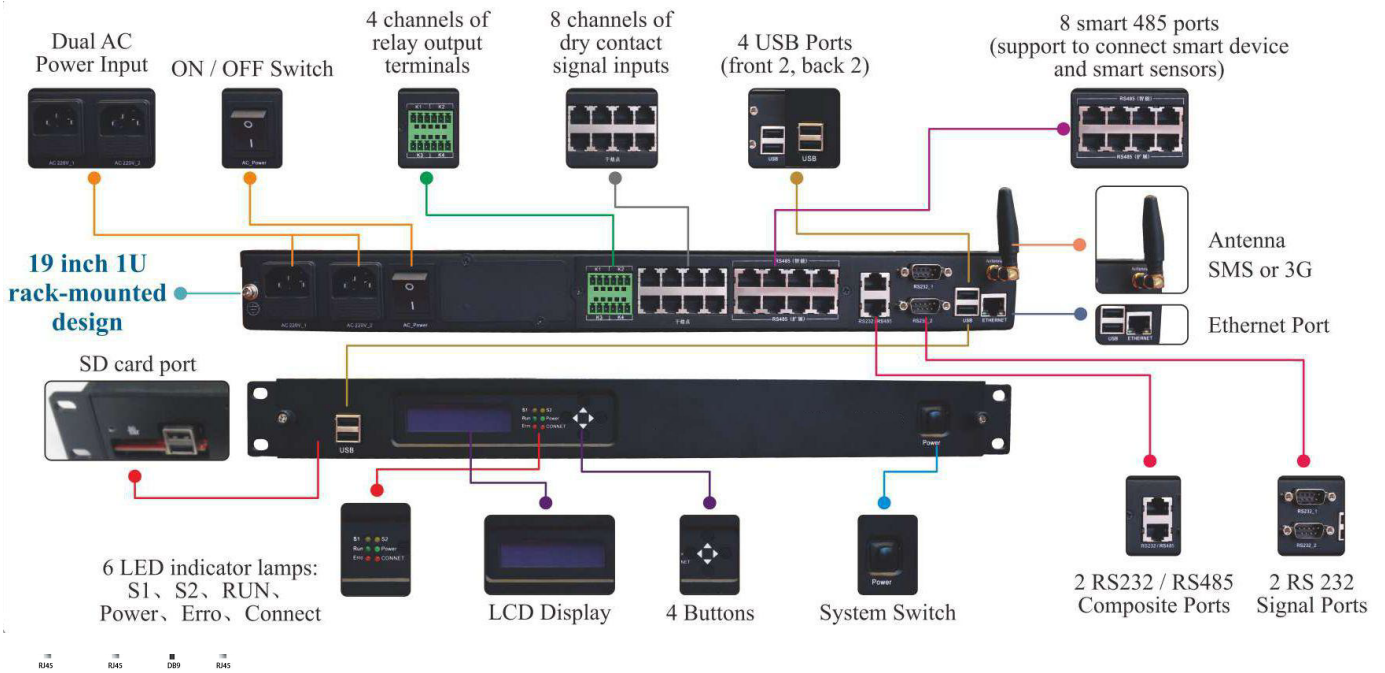
- **Built-in WEB server to achieve HTTP access;**
- **Support IPV4/IPV6, SSL, SSH, HTTP, HTTPS;**
- **Support SNMP V3 protocol, RFC1628 MIB, XPPC MIB;**
- **Support UPS monitoring(1phase/3phase);**
- **Support Precision/ Split air condition monitoring;**
- **Support Power Distribution monitoring;**
- **Support Power Distribution Cabient branches monitoring;**
- **Support Online VRLA Battery Monitoring System integration;**
- **Support Smart/Diesel Generator monitorng;**
- **Support to extend 8 digital inputs(Such as smoke, water leakage, door/window contact, etc);**
- **Support to extend 80 temperature and humidity detection and 8 general air condition infrared control;**
- **Support Live video monitoring;**
- **Support android APP monitoring software;**
- **Built-in 12 hours rechargeable battery;**
- **Support history events and data storage (expansion by SD card capacity);**
- **Support sound light alarm, SMS, E-mail alarm and SNMP Trap;**
- **Support multiple users authority management;**
- **Support DHCP;**
- **Support scheduled task;**
- **Support TELNET, WEB page configurations;**
- **Support network upgrade, USB upgrade;**



APP Client Side

Any Time Any Where, to Master your Data Center Status
Take Your Data Center Monitoring In Pocket

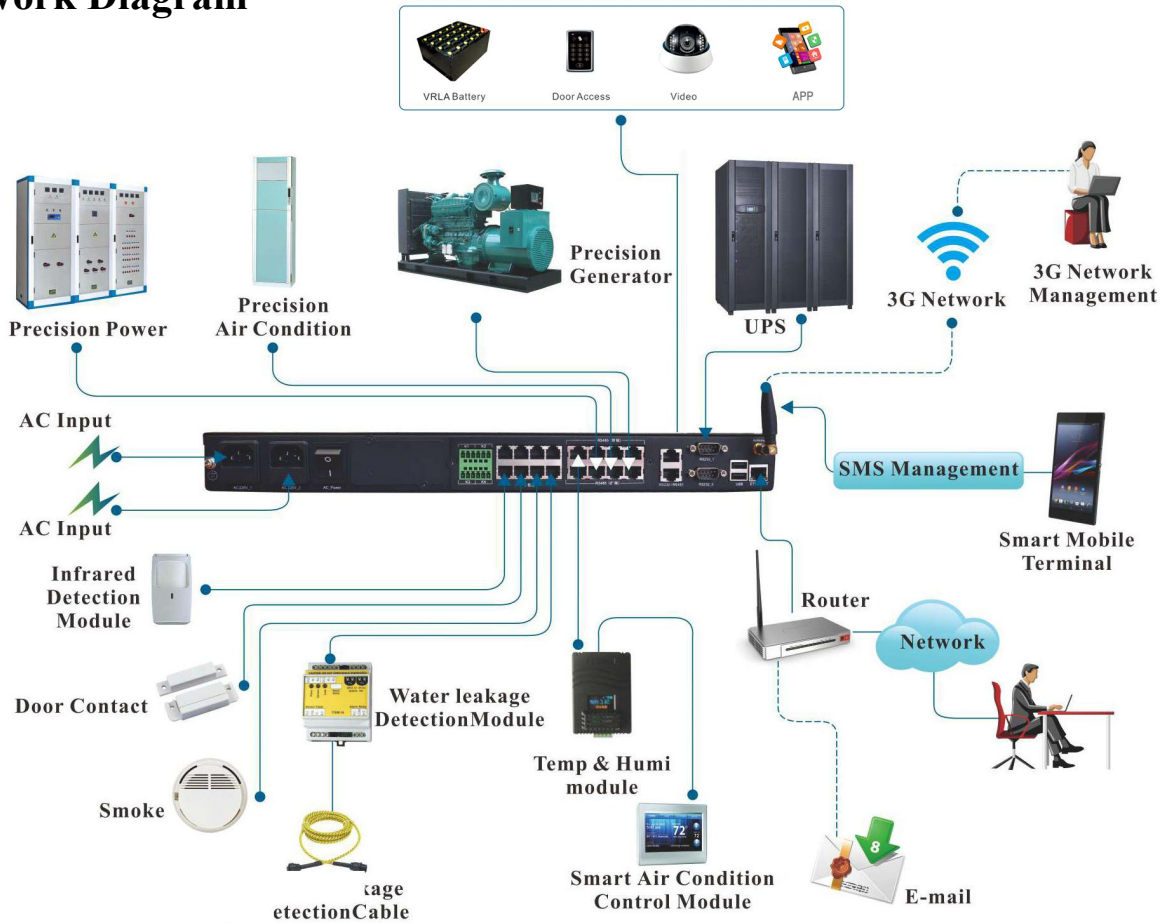
2. Ports Introduction



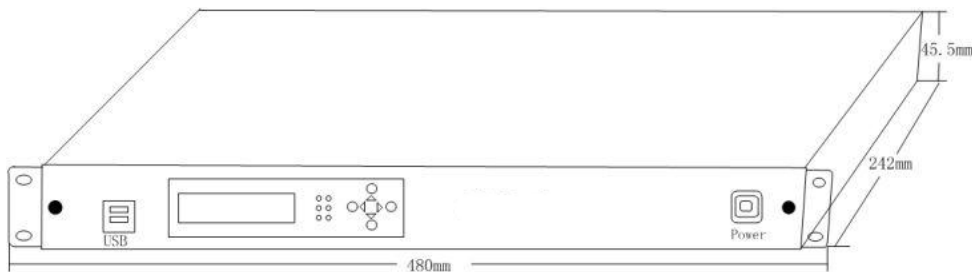
4 Digital Output (Relay out) 8 Digital Input 2*4 RS485 Ports 2 RS485 / RS232 Composite Ports 2 RS232 Serial Ports 2 Ethernet Ports



3. Network Diagram

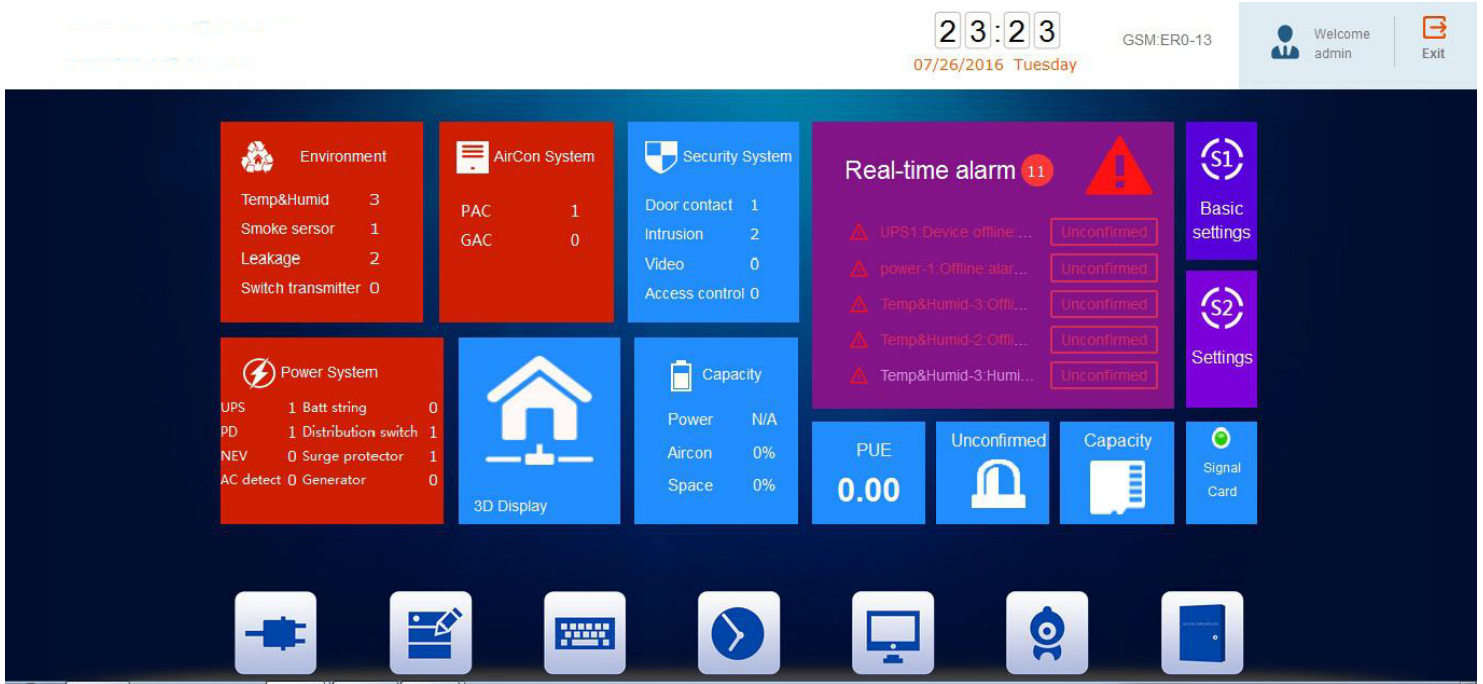


4. Dimension

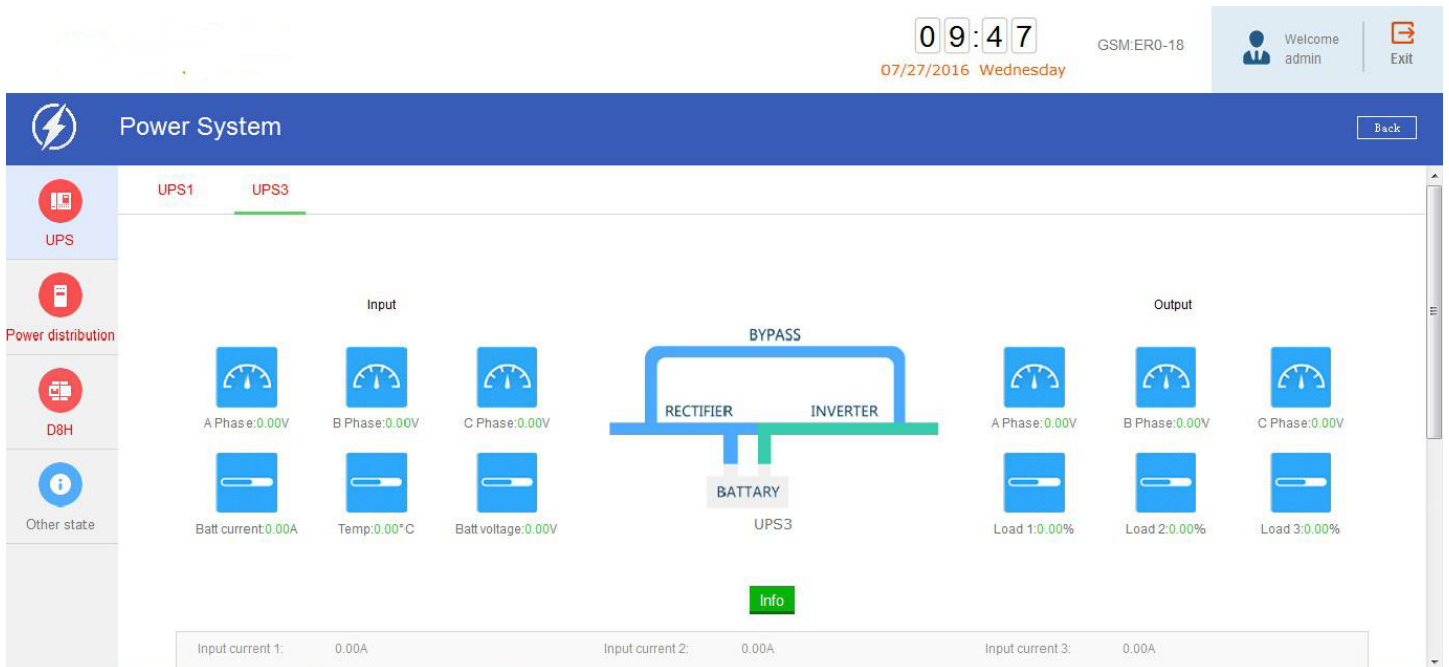


<Elegant 1U 19 inch design

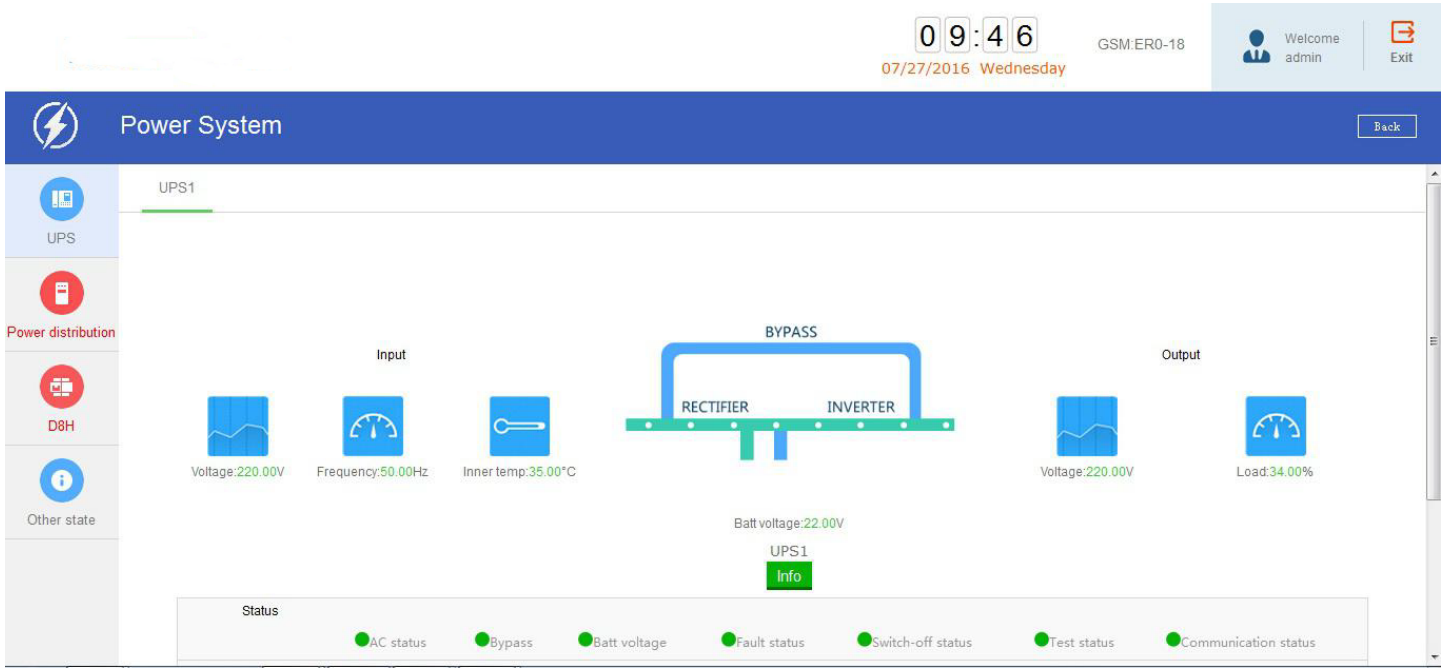
5. Monitoring Interface



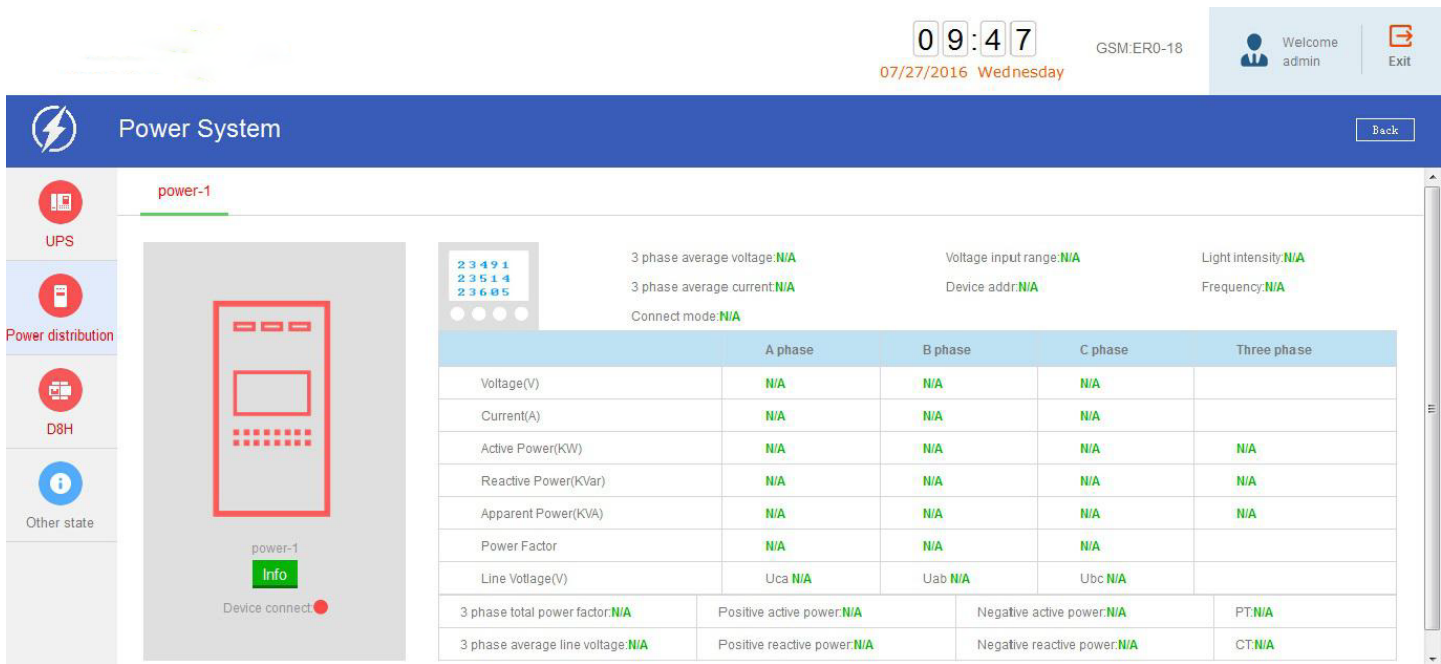
<Home Page>



Three-phase UPS Monitoring



Single-phase UPS Monitoring



Power Distribution Monitoring

23:24
07/26/2016 Tuesday

GSM:ER0-11

Welcome admin Exit

AirCon System Back

 Precision Aircon Info Communication: ●	 Compressor N/A	 Fan N/A	 Heater N/A	 Humidifier N/A	 Dehumidifier N/A																									
	<ul style="list-style-type: none"> ● General fault ● High temp fault ● Low temp fault ● Fan fault ● Water leakage fault ● Humidifier fault 	<ul style="list-style-type: none"> ● Power fault ● High humidity fault ● Low humid fault ● Fire and smoke fault ● Compressor fault 	<table style="width: 100%; border-collapse: collapse;"> <tr><td>Return air temp:(°C)</td><td>N/A</td><td>Return air humid:(%)</td><td>N/A</td></tr> <tr><td>Indoor temp:(°C)</td><td>N/A</td><td>Indoor humid:(%)</td><td>N/A</td></tr> <tr><td>Supply air temp:(°C)</td><td>N/A</td><td>Supply air humid:(%)</td><td>N/A</td></tr> <tr><td>Setting temp:(°C)</td><td>N/A</td><td>Setting humid:(%)</td><td>N/A</td></tr> <tr><td>Switch on temp:(%)</td><td>N/A</td><td>Switch off temp:(°C)</td><td>N/A</td></tr> <tr><td>Temp alarm max threshold:(°C)</td><td>N/A</td><td>Temp alarm min threshold:(°C)</td><td>N/A</td></tr> <tr><td>Humid alarm max threshold:(%)</td><td>N/A</td><td>Humid alarm min threshold:(%)</td><td>N/A</td></tr> </table>	Return air temp:(°C)	N/A	Return air humid:(%)	N/A	Indoor temp:(°C)	N/A	Indoor humid:(%)	N/A	Supply air temp:(°C)	N/A	Supply air humid:(%)	N/A	Setting temp:(°C)	N/A	Setting humid:(%)	N/A	Switch on temp:(%)	N/A	Switch off temp:(°C)	N/A	Temp alarm max threshold:(°C)	N/A	Temp alarm min threshold:(°C)	N/A	Humid alarm max threshold:(%)	N/A	Humid alarm min threshold:(%)
Return air temp:(°C)	N/A	Return air humid:(%)	N/A																											
Indoor temp:(°C)	N/A	Indoor humid:(%)	N/A																											
Supply air temp:(°C)	N/A	Supply air humid:(%)	N/A																											
Setting temp:(°C)	N/A	Setting humid:(%)	N/A																											
Switch on temp:(%)	N/A	Switch off temp:(°C)	N/A																											
Temp alarm max threshold:(°C)	N/A	Temp alarm min threshold:(°C)	N/A																											
Humid alarm max threshold:(%)	N/A	Humid alarm min threshold:(%)	N/A																											

Air Condition Monitoring

23:23
07/26/2016 Tuesday

GSM:ER0-12

Welcome admin Exit

Environment System Back

<div style="text-align: center; font-size: 24px; color: red;"> </div> <p>Temp: 0.00°C</p> <p>Humid: 0.00%</p> <p>Connect status: Disconnect</p> <p style="font-size: 12px;">Temp&Humid-1</p>	<div style="text-align: center; font-size: 24px; color: red;"> </div> <p>Temp: 0.00°C</p> <p>Humid: 0.00%</p> <p>Connect status: Disconnect</p> <p style="font-size: 12px;">Temp&Humid-2</p>	<div style="text-align: center; font-size: 24px; color: red;"> </div> <p>Temp: 0.00°C</p> <p>Humid: 0.00%</p> <p>Connect status: Disconnect</p> <p style="font-size: 12px;">Temp&Humid-3</p>
<div style="text-align: center; font-size: 24px; color: blue;"> </div> <p>Status: Normal</p> <p style="font-size: 12px;">Smoke</p>	<div style="text-align: center; font-size: 24px; color: blue;"> </div> <p>Status: Normal</p> <p style="font-size: 12px;">Leakage-1</p>	<div style="text-align: center; font-size: 24px; color: blue;"> </div> <p>Status: Normal</p> <p style="font-size: 12px;">Leakage-2</p>

Environmental Monitoring

Security System

09:44
07/27/2016 Wednesday

GSM:ER0-18

Welcome admin Exit

Back

Status: **Normal**

Infrared-1

Status: **Normal**

Infrared-2

Status: **Normal**

Door contact

Info

CCTV

Info

Access

Security Monitoring

History Record

09:57
07/27/2016 Wednesday

GSM:ER0-18

Welcome admin Exit

Back

Number	Device Type	Event Title	Occurance Time	End	Duration	Record	
8493	Three normal distribution	power:Offline:alarm happen!	2016-07-27 09:54:55			No Record	Details
8492	Ordinary air conditioner	air conditioning:Offline:alarm happen!	2016-07-27 09:54:19			No Record	Details
8491	Single Phase UPS	UPS4:Offline:alarm happen!	2016-07-27 09:50:44			No Record	Details
8490	Three Phase UPS	UPS3:Device offline:alarm happen!	2016-07-27 09:47:08			No Record	Details
8489	Battery capacity module	Batt Manager:Battery power disconnect:alarm happen!	2016-07-27 09:46:34			No Record	Details
8488	Generalair	Precision Aircon :Communication failure:alarm happen!	2016-07-27 09:41:46			No Record	Details
8487	Three normal distribution	power-1:Offline:alarm happen!	2016-07-27 09:41:35			No Record	Details

Alarm History Record

10:16 GSM:ER0-17
07/27/2016 Wednesday

Welcome admin Exit

History Record Back

Alarm History Record
Daily Data Record
User Control Record
Vendor Quality Static
Maintenance Static
SMS Record

Start:

End:

Device:

Check

Export

Input voltage	Output voltage	Present load	Input frequency	Battery capacity	Battery temperature	Battery total voltage	Time
220 V	220 V	34 %	50 Hz	9 %	0 °C	22 V	2016-07-27 10:16:36
220 V	220 V	34 %	50 Hz	9 %	0 °C	22 V	2016-07-27 10:11:36
220 V	220 V	34 %	50 Hz	88 %	0 °C	22 V	2016-07-27 10:06:36
220 V	220 V	34 %	50 Hz	88 %	0 °C	22 V	2016-07-27 10:01:36
220 V	220 V	34 %	50 Hz	88 %	0 °C	22 V	2016-07-27 09:56:25
220 V	220 V	34 %	50 Hz	88 %	0 °C	22 V	2016-07-27 09:51:25
220 V	220 V	34 %	50 Hz	88 %	0 °C	22 V	2016-07-27 09:46:11

A total of 7 Article|<<< >>>| [1]

Daily Data Record

10:05 GSM:ER0-19
07/27/2016 Wednesday

Welcome admin Exit

Capacity Management Back

Power Capacity Management
Aircon Capacity Management
Space Capacity Management

Add cabinets

Remaining capacity
48%
Server Cabinet-1

Remaining capacity
90%
Server Cabinet-12

Remaining capacity
69%
Switch Cabinet1

Remaining capacity
38%
Switch Cabinet-2

Capacity Management

Technical Parameters

CPU	32-bit ARM RISC-based 800 MHz high-speed center processor
RAM	512M byte SDRAM
Flash ROM	1G byte Flash
Network	10/100Mbps High-speed Ethernet network self-adaptive
Device Port	2 RS232 ports UPS
	2 RS232/RS485 Composite ports UPS, precision A/C, power distribution
	2 RS485 bus Temp&Humid, general A/C
	8 DIGIT INPUTS(RJ11 type) Smoke, leakage,door contact, motion,newfan,etc
	Support RFC1213, RxFC1628, PPC MIB
Network Protocol	TCP/IP, UDP, SNMP, Telnet, SNTP, HTTP, SMTP, DHCP, DNS, TFTP, ARP, ICMP, HTTPS, PPP, etc.
Input Power	110V-240V(60HZ/50HZ)
Running Environment	Temperature: 0°C~70°C
	Humidity: 10~85%
Other Configuration	Real-time system clock synchronization
System Upgrade	Network upgrade
System Security	Provide filtering mechanism based on IP, and system operation, control and management of the user ID and password protection.
Languages	Chinese/English, support OEM other languages
Safety Certificate	CE, FCC

Accessories

SN	Sensor Name	MN	Function
System Alarm			
1	Telephone Alarm Module	GN-SEN-77423	Provide telephone alarm notification
2	Sound Light Alarm Sensor	GN-SEN-77412	Provide sound light notification
Environment System			
3	Temp& Humid Sensor	GN-SEN-77015 OLED Display	Detect data center temperature and humidity parameters(Every 20 M ² need to install 1 pc)
		GN-SEN-77012 Digital Type	
4	Smoke Sensor (With RJ11 Converter)	GN-SEN-77150	Detect indoor data center monitor status (Every 20 M ² -30M ² need to install 1pc)
5	Infrared Sensor (With RJ11 Converter)	GN-SEN-77149	Detect data center intrusion, motion status
6	Door Contact (With RJ11 Converter)	GN-SEN-77435	Detect door or window on/off status
7	Switch Value Transmitter (With RJ11 Converter)	GN-SEN-77755	Detect on-off status of air condition/new fan
8	Sound Light Sensor	GN-SEN-77412	Give sound light alarm notification when alarm happens
9	Water Leakage Sensor	GN-SEN-77151 (Non-Locating)	Detect data center water leakage status, work with water leakage cable
10	Water Leakage Sensor	GN-SEN-91245 (Locating)	Detect data center water leakage status with details location, work with water leakage cable
Air Condition System			
11	AirCon Infrared Component	GN-SEN-77404	Remotely control air condition on-off, with auto reboot when AC recover
Power Distribution System			
12	Three Phase Energy Meter	GN7-SEN-7207	Digital display, support to capture the power distribution cabinet of voltage, current, active power, etc
13	Single Phase Energy Meter	GN-SEN-77208	Digital display, support to capture the power distribution cabinet of voltage, current, active power, etc
14	Mains Branch-switch Monitor	GN-SEN-77305	Support to monitor 8 electricity switch signal at a same time, output 485 signal to sitepro host, it most works with electricity meter.